

Overmiller

Gelbvieh and Red Angus

Powerful Maternal Genetics

Production Sale

Saturday, February 15, 2025



1:00 PM CST

Sale facility north of Smith Center, KS

OVERMILLER

Gelbvieh and Red Angus

Welcome to Overmiller Gelbvieh and Red Angus,

Thank you for taking the time to look through the offering. To our past customers, we truly value your business and friendship. If you are new to our operation, then we would like to thank you for giving our breeding program and cattle a look. We take it seriously to produce the best product we can.

All members of the family are involved and play a role. This is truly a family owned and run operation. Just as generations of Overmiller's have been involved in beef production, so it is outstanding how generations of cow families have been around a long time. We truly value the female side and believe cows make a huge difference.

We have more commercial females than ever and we take the production of them just as serious as raising bulls. We have a large # of these heifers that are sired by AI sires and over 40 are the result of using sexed heifer semen.

Again, we extend a sincere Thank You to all our past customers and friends for your loyal support and interest in our breeding program. We feel we have great cattle producers as our customers. This can be backed up with multiple producers topping the market with their calves this fall and winter. Feel free to come and look anytime before the sale or call with any questions you may have. Come early and join us on sale day for dinner. We look forward to seeing you on February 15th!

We have often been asked which bulls we feel have the most maternal strength bred in so this year we marked them as Maternally Bred in the catalog. There are others that will raise good females that will make quality cows but the bulls marked have several generations of time tested females in their pedigrees.

Look to page 6 for a description for how the older bulls were handled and developed.



DVAuction
Broadcasting Real-Time Auctions

Visit www.dvauction.com and Register!

It's as easy as 1,2,3 ...

1. Create an account at www.dvauction.com under the "create new account" tab
2. Apply for bidding by clicking "apply for bidding" in the upper left corner of your screen, at least 24 hours prior to the auction.
3. Tune into the sale and make your purchases!

For General Questions Please

Contact Our Office:

(402)316-5460 or

support@dvauction.com

*High Speed Internet Access Required

Give us a call, we would be glad to talk about the offering with you!

Brent 785-282-0485 cell

Kelly 785-389-3522 or 785-282-1182 cell

The catalog order will NOT be the sale order.

Any announcements on sale day take precedence over any printed information found in the catalog.

AUCTIONEER:

Tracy Harl 402-469-3852

Livestock Representatives:

Randy Rasby 308-539-6195 (American Cattleman)

Neil Bouray 402-879-5566 (Mankato Livestock)

Barrett Simon 316-452-1792 (Special Assignment)

Taylor Ohlde 913-626-2715 (Red Angus Assoc. America)

Tom Strahm 785-547-7999 (American Gelbvieh Assoc.)

Herd Health:

All cattle will be current on all vaccinations and worming and are ready for shipment.

Liability:

Neither the owners nor anyone connected with the sale assumes responsibility for damages of any kind, legal or otherwise. All persons who attend the sale do so at their own risk.

First Breeding Season Guarantee:

All bulls with an injury occurring by September 1 or within 90 days of turnout must be returned to the Overmiller's to receive any credit. All bulls must be returned with an affidavit from a vet stating the issue is incurable. All claims must be turned in by September 1, or no guarantee will be honored. This does not cover death of the animal. Livestock mortality insurance will be available to purchase.

Jensen Livestock Agency Sheila Jensen 785-262-1116

Terms of Sale:

Payment is due the day of the sale. Animals sell under the suggested terms and conditions of the AGA and RAAA.

Delivery of Bulls:

Free delivery up to 350 miles or to central locations, or we will make every effort to accommodate the buyer. We will deduct \$50 if you take your bull home sale day.

Transfers:

All registered cattle will be transferred into the buyer's name. Bulls and heifers listed as commercial have no papers.

Lodging/Accommodations:

Country Lodgings 785-389-6281

4062 O Road, Smith Center

Veterinary Health Care by:

Suchsland Vet Services

Ben Suchsland

Kensington, KS

785-476-5546

Directions to Ranch:

From Hwy. 36 and 281 junction in Smith Center go 11 miles north on P Road to 50 Road (Church on corner) Turn west, go 1 mile to O Road and then 1/8 mile back north to drive up to red barns.

From Riverton, NE go 11 miles south on 41 1/2 Road, to church corner 50 Road, turn west, go 1 mile west and then 1/8 mile back north on O Road to drive up to red barns.

Other Information:

EPD's are current with both associations as of Jan. 1, 2025. Scrotal measurements will be available on sale day.

Pictures were taken on Dec. 27 by Allison Manchester, and videos were done by DVAuction, Lori Brown

We are retaining a 1/4 semen interest in all bulls.

Any past customer who buys a bull this year and brings a new purchaser will receive \$50 off their bull.

Volume Discount: 3 Bulls 3%, 4 Bulls 4% & 5 bulls 5%



OVER MOUNTAIN 782M

Reg. #:4998115 BD:1/22/2024 Tattoo: OVER782M

BW:91 WW:750 YW:1269Ratio:BW:104 WW:125 YW:123

C-T RED ROCK 5033 (BROWN JYJ REDEMPTION Y1334)

C-T REPUTATION 0094

C-T LINSEY 8119 (PIE ONE OF A KIND 352)

OVER COOPERSTOWN 350C (ZAMBONI 13Z)

OVER EVERYDAY 782E (MPPA 107)

WONDER BRA 982W (HXC RAVEN 6003S)

ProS	HB	GM	CED	BW	WW	YW	Milk	Marb	CW	REA
132	39	93	12	-0.6	100	162	33	0.62	54	0.65
14%	76%	2%	69%	74%	1%	1%	3%	17%	1%	1%

5 Star Performance Bull Carcass Merit

Elite EPD package with his growth and breed leading carcass traits.

Deep Wide Masculine Square Hipped Powerhouse

Raised by a calf producing machine with MPPA of 107

1 of 3 bulls in Red Angus Registry that is 131 ProS, 90 GM, 11 CED,

-0.05 BW, 160 YW, 0.61 Marb



Lot 1 ~ OVER Mountain 782M



OVER LEAVE EM BE 248L

Reg. #:4909882 BD:10/23/2023 Tattoo: OVER248L

BW:77 WW:612 YW: Ratio:BW:94 WW:111 YW:110

C-T RED ROCK 5033 (BROWN JYJ REDEMPTION Y1334)

C-T REPUTATION 0094

C-T LINSEY 8119 (PIE ONE OF A KIND 352)

BIEBER SPARTACUS A193 (BIEBER ROUSE SAMURAI X22)

BIEBER TILLY 248D (MPPA 102)

BIEBER TILLY 304A (GMRA PEACEMAKER 1216)

ProS	HB	GM	CED	BW	WW	YW	Milk	Marb	CW	REA
101	46	55	16	-2.1	93	149	30	0.47	39	0.14
55%	64%	41%	10%	43%	1%	1%	16%	39%	7%	50%

Maternally Bred

Dam was a donor at Bieber Red Angus before Roger purchased her. Super complete individual that is a breed leader for Calving Ease and Growth His ratios read like a herd bull, below the group at birth and well above average at weaning and yearling.



C-T Reputation, sire to many lots in sale



OVER LOUDER 052L

Reg. #:4909970 BD:9/14/2023 Tattoo: OVER052L

BW:78 WW:630 YW: Ratio:BW:100 WW:114 YW:110

OVER DRAFT PICK 413D (C-T RED QUEST 4010)

OVER HERDSMAN 577H

OVER CONSTANCE 577C (C-BAR CONTROL 108Z)

STRA RELENTLESS (BIEBER DRIVEN C540)

OVER HER RELENTLESSNESS 052H (MPPA 104)

OVER ELZA 743E (CLIN 412B OF Z12 X28)

ProS	HB	GM	CED	BW	WW	YW	Milk	Marb	CW	REA
143	72	71	16	-2	73	110	32	0.77	28	0.26
7%	15%	15%	13%	46%	23%	36%	6%	6%	37%	28%

WOWSER, as stout and muscular as any Red Angus we have sold.

Dam is a result of our ET program.

Carcass Merit

Not many bulls with this much muscle are still top 6% in the top of breed for Marbling. He was a stand out stud all last winter.



Lot 3 ~ OVER Louder 052L



OVER LIGHTER 023L

Reg. #:4788322 BD:3/22/2023 Tattoo: OVER023L

BW:64 WW:653 YW: Ratio:BW:84 WW:105 YW:102

RREDS SENECA 731C (BIEBER ROLLIN DEEP Y118)

1DRA SENECA 1001

C-BAR ABIGRACE X13 (RED FINE LINE MULBERRY 26P)

OVER DRAFT PICK 413D (C-T RED QUEST 4010)

OVER HEATHER 023H (MPPA 100)

FEDDES BLOCKANA 9223 (BIEBER MAKE MIMI 7249)

ProS	HB	GM	CED	BW	WW	YW	Milk	Marb	CW	REA
115	58	57	17	-5.4	68	109	26	0.58	23	0
33%	39%	35%	7%	4%	38%	40%	44%	21%	53%	78%

Maternally Bred

Balance and Style to burn! Breed leading Calving Ease, Birth Weight, and Marbling.

Backed by the Legendary Blockana 899 and Abigrace donors keep the daughters.



Lot 4 ~ OVER Lighter 023L



OVER LUCAS 763L

Reg. #:4788288 BD:3/22/2023 Tattoo: OVER763L

BW:77 WW:636 YW: Ratio:BW:97 WW:102 YW:108

RREDS SENECA 731C (BIEBER ROLLIN DEEP Y118)

1DRA SENECA 1001

C-BAR ABIGRACE X13 (RED FINE LINE MULBERRY 26P)

C-T RED QUEST 4010 (BROWN JYJ REDEMPTION Y1334)

OVER ESCAPADE 763E (MPPA 104)

FEDDES LARKABA 9163 (LUCHT ROMEO R052)

ProS	HB	GM	CED	BW	WW	YW	Milk	Marb	CW	REA
72	33	39	16	-4.6	73	121	28	0.32	33	-0.1
90%	84%	76%	12%	9%	22%	18%	27%	77%	17%	91%

Rare Genetic Gem here with this combination of CE, BW, WW, YW. Top that off with his top 20% for the always important Carcass weight which is what you get paid for.

Dam is the natural calf of the 9163 donor.



Lot 5 ~ OVER Lucas 763L



OVER LEADS 067L

Reg. #:4788330 BD:4/22/2023 Tattoo: OVER067L

BW:67 WW:629 YW: Ratio:BW:88 WW:101 YW:101

RREDS SENECA 731C (BIEBER ROLLIN DEEP Y118)

1DRA SENECA 1001

C-BAR ABIGRACE X13 (RED FINE LINE MULBERRY 26P)

OVER DRAFT PICK 413D (C-T RED QUEST 4010)

OVER HIGH COUNTRY 067H (MPPA 97)

OVER DARLENE 667D (CLIN 412B OF Z12 X28)

ProS	HB	GM	CED	BW	WW	YW	Milk	Marb	CW	REA
122	66	55	16	-3.4	75	124	23	0.46	34	0.09
25%	24%	40%	12%	22%	16%	14%	80%	41%	15%	62%

Balanced EPD's that allow him to have value in all aspects of the industry. He is one you will find sale day.



OVER Draft Pick 413D, sire to dams of lots 4 & 6



OVER LARRY 881L

Reg. #:4788314 BD:4/28/2023 Tattoo: OVER881L
 BW:94 WW:674 YW: Ratio:BW:120 WW:108 YW:97
 C-T RED ROCK 5033 (BROWN JYJ REDEMPTION Y1334)

C-T REPUTATION 0094

C-T LINSEY 8119 (PIE ONE OF A KIND 352)
 3SCC DEMAND D37 (3SCC DOMAIN A163)

OVER FELINE 881F (MPPA 102)

OVER ANGEL 381A (XQUESTADOR 71X)

ProS	HB	GM	CED	BW	WW	YW	Milk	Marb	CW	REA
72	26	46	7	0.9	79	123	27	0.38	23	0.16
91%	92%	62%	97%	91%	9%	14%	37%	65%	54%	46%

Balanced and powerful individual. He stood out all summer as a calf nursing his dam. Performance bull.



Lot 7 ~ OVER Larry 881L



OVER LAREDO 668L

Reg. #:4788260 BD:4/15/2023 Tattoo: OVER668L
 BW:71 WW:631 YW: Ratio:BW:87 WW:103 YW:
 C-T RED ROCK 5033 (BROWN JYJ REDEMPTION Y1334)

C-T REPUTATION 0094

C-T LINSEY 8119 (PIE ONE OF A KIND 352)
 C-BAR CONTROL 108Z (HXC CONQUEST 4405P)

OVER DIVE 668D (MPPA 104)

FEDDES BLOCKANA 9168 (FEDDES DIRECT NORS 7130)

ProS	HB	GM	CED	BW	WW	YW	Milk	Marb	CW	REA
104	47	57	15	-4.5	68	108	33	0.57	15	0.34
49%	61%	36%	17%	10%	41%	41%	3%	22%	80%	18%

Maternally Bred

Carcass Merit

Calving Ease option that still offers growth and breed leading marbling.



OVER LAST STAND 03L

Reg. #:4831386 BD:4/19/2023 Tattoo: OVER03L
 BW:83 WW:673 YW: Ratio:BW:108 WW:108 YW:104
 C-T RED ROCK 5033 (BROWN JYJ REDEMPTION Y1334)

C-T REPUTATION 0094

C-T LINSEY 8119 (PIE ONE OF A KIND 352)
 OVER DRAFT PICK 413D (C-T RED QUEST 4010)

OVER HEDGES 03G (MPPA 103)

FEDDES BLOCKANA 8103 (FEDDES BIG SKY R9)

ProS	HB	GM	CED	BW	WW	YW	Milk	Marb	CW	REA
113	46	68	12	-2.2	85	135	29	0.44	42	0.52
36%	64%	19%	69%	42%	3%	5%	22%	45%	5%	3%

Maternally Bred

Balanced trait sire, backed by proven cow families on both sides.



OVER LIGHT UP 705L

Reg. #:4788276 BD:4/20/2023 Tattoo: OVER705L
 BW:80 WW:691 YW: Ratio:BW:101 WW:111 YW:110
 C-T RED ROCK 5033 (BROWN JYJ REDEMPTION Y1334)

C-T REPUTATION 0094

C-T LINSEY 8119 (PIE ONE OF A KIND 352)
 C-T RED QUEST 4010 (BROWN JYJ REDEMPTION Y1334)

OVER ELAYNA 705E (MPPA 103)

UPPER DECK 805U (LJC JAVELIN M08)

ProS	HB	GM	CED	BW	WW	YW	Milk	Marb	CW	REA
87	28	58	14	-3.3	84	129	30	0.56	27	0.33
75%	90%	34%	36%	23%	4%	9%	18%	24%	40%	19%

Carcass Merit

Dark red Reputation son who is skeletally correct. So attractive on the profile. One of the big performers on the scales and his EPD's reflect his moderate birth with growth phenotype.



OVER LINK 6383L

Reg. #:4788264 BD:4/24/2023 Tattoo: OVER6383L
 BW:85 WW:703 YW: Ratio:BW:107 WW:113 YW:115
 RREDS SENECA 731C (BIEBER ROLLIN DEEP Y118)

1DRA SENECA 1001

C-BAR ABIGRACE X13 (RED FINE LINE MULBERRY 26P)
 OVER AVATAR 087A (XQUESTADOR 71X)

OVER DILUSION 6383D (MPPA 104)

OVER ATTRACTIVE 3183A (C-BAR CONTOUR 107X)

ProS	HB	GM	CED	BW	WW	YW	Milk	Marb	CW	REA
73	37	36	13	-2	71	114	26	0.26	36	0.2
90%	79%	81%	43%	46%	27%	29%	50%	87%	11%	38%

Wide body bull that was at the top of the group at weaning and yearling weight times.



OVER LONG HAUL 892L

Reg. #:4788306 BD:3/30/2023 Tattoo: OVER892L

BW:78 WW:662 YW: Ratio:BW:98 WW:106 YW:104

OVER DRAFT PICK 413D (C-T RED QUEST 4010)

OVER HERDSMAN 577H

OVER CONSTANCE 577C (C-BAR CONTROL 108Z)

ZAMBONI 13Z (C-BAR POWERBALL 102W)

OVER FAR BEYOND 892F (MPPA 109)

SRAF BEYOND 25P (LCC ABOVE &BEYOND 1300J)

ProS	HB	GM	CED	BW	WW	YW	Milk	Marb	CW	REA
94	45	49	15	-3.9	68	107	31	0.51	26	0.23
65%	66%	56%	21%	16%	40%	45%	9%	31%	43%	32%

Maternally Bred

Smooth sided, attractive bull from a great cow. Balanced EPD's and balanced in life.



Lot 12 ~ OVER Long haul 892L



OVER LIFETIME 315L

Reg. #:4788224 BD:3/19/2023 Tattoo: OVER315L

BW:85 WW:738 YW: Ratio:BW:108 WW:101 YW:99

OVER DRAFT PICK 413D (C-T RED QUEST 4010)

OVER HERDSMAN 577H

OVER CONSTANCE 577C (C-BAR CONTROL 108Z)

XQUESTADOR 71X (HXC CONQUEST 4405P)

OVER AMANDA 315A (MPPA 105)

SIBYL 615SS (LJC PAWNEE LANCER P17)

ProS	HB	GM	CED	BW	WW	YW	Milk	Marb	CW	REA
115	60	55	15	-3.3	64	95	28	0.68	14	0.2
34%	36%	40%	17%	23%	55%	71%	26%	12%	82%	38%

Maternally Bred

Carcass Merit

Big bodied and his dam hails from the easy fleshing "15" cow line.



OVER LED ZEPPELIN 1857L

Reg. #:4788376 BD:5/13/2023 Tattoo: OVER1857L

BW:63 WW:637 YW: Ratio:BW:95 WW:109 YW:107

9 MILE FRANCHISE 6305 (SPUR FRANCHISE OF GARTON)

JENS MR PROBLEM SOLVER 7015H

C-BAR ABIGRACE 7015E (RED U-2 RECKONING 149A)

FEDDES MAGGIO 806-E303 (PIE ONE OF A KIND 352)

OVER JUSTAMERE 1857J (MPPA 104)

OVER FRANCE 857F (OVER COOPERSTOWN 350C)

ProS	HB	GM	CED	BW	WW	YW	Milk	Marb	CW	REA
78	12	66	16	-3.7	72	117	34	0.57	38	0.15
85%	98%	21%	16%	18%	27%	23%	2%	22%	9%	49%

Calving Ease prospect that is in the top 27% of breed for growthg, Marbling and Carcass Weight. His 2 year old dam did a great job with her first calf.



OVER LYNDON 107L

Reg. #:4788382 BD:5/7/2023 Tattoo: OVER107L

BW:67 WW:680 YW: Ratio:BW:102 WW:116 YW:112

9 MILE FRANCHISE 6305 (SPUR FRANCHISE OF GARTON)

JENS MR PROBLEM SOLVER 7015H

C-BAR ABIGRACE 7015E (RED U-2 RECKONING 149A)

OVER DIVINE 02D (SLGN YARDMASTER 125Y)

OVER JUST LANA 107J (MPPA 109)

OVER FINE LANA 8007F (C-T RED QUEST 4010)

ProS	HB	GM	CED	BW	WW	YW	Milk	Marb	CW	REA
89	37	52	16	-3.3	64	98	35	0.44	35	0.32
72%	78%	49%	10%	23%	57%	64%	1%	45%	12%	20%

Bigger outlined bull with calving ease and impressive WW ratio. We love his design. Several donors in his pedigree.



Lot 15 ~ OVER Lyndon 107L



OVER LEGION 553L ET

Reg. #:4833852 BD:5/5/2023 Tattoo: OVER553L

BW:84 WW:672 YW: Ratio:BW: WW: YW:

OVER AT EASE 510A (C-BAR CONTOUR 107X)

OVER EMPIRE 720E

FEDDES BLOCKANA 9148 (LCHMN GRANDCANYON 1244G)

HXC CONQUEST 4405P (BECKTON JULIAN GG B571)

X-BLOCKANA 02X (MPPA 115)

FEDDES BLOCKANA 926 (LMAN KING ROB 8621)

ProS	HB	GM	CED	BW	WW	YW	Milk	Marb	CW	REA
67	31	37	10	1.2	71	114	33	0.28	15	0.53
93%	87%	80%	82%	93%	28%	29%	4%	84%	80%	3%

Maternally Bred

Maternal gems are these ET Brothers. Backed by several of our donor cows and favorite cows to walk here. Deep bodied easy fleshing kind.

Keep the daughters of Lots 16 and 17



OVER Empire 720E ~ sire of lot 16 & 17



OVER LANDING 403L ET

Reg. #:4833856 BD:5/5/2023 Tattoo: OVER403L

BW:68 WW:658 YW: Ratio:BW: WW: YW:

OVER AT EASE 510A (C-BAR CONTOUR 107X)

OVER EMPIRE 720E

FEDDES BLOCKANA 9148 (LCHMN GRANDCANYON 1244G)

HXC CONQUEST 4405P (BECKTON JULIAN GG B571)

X-BLOCKANA 02X (MPPA 115)

FEDDES BLOCKANA 926 (LMAN KING ROB 8621)

ProS	HB	GM	CED	BW	WW	YW	Milk	Marb	CW	REA
61	44	17	12	-1.4	57	90	33	0.08	16	0.52
96%	67%	98%	67%	58%	79%	79%	4%	99%	78%	3%

Maternally Bred

Maternal gems are these ET Brothers. Backed by several of our donor cows and favorite cows to walk here. Deep bodied easy fleshing kind.

Keep the daughters of Lots 16 and 17



X-Blockana 02X ~ dam of lot 16 & 17

The coming 2 year olds are not left overs; they have never been offered. We are transitioning our registered cows to late April/May calving. The bulls will not have big yearling weights as we bring them along slow to try to give you the buyer the hardest product we can. The coming 2 year olds were weaned last fall and then hauled out to grass and regrowth sudan grass for several months. Then they were moved to corn stalks. The first of May they went to grass for the summer and ran there until October 1st. They were then moved home to a 50 acre pasture where they can still roam for a 1/2 mile. They are being fed a TMR to allow them to develop and allow you the buyers to see the body type differences. The bulls were weighed going to grass in May and then coming off of grass in October as a way to see which bulls can grow and gain on grass alone.

The 18 month old bulls also ran on grass all summer like the 2 year olds and are not pushed for big yearling weights.



OVER LATE NIGHT 71L

Reg. #:4909918 BD:11/7/2023 Tattoo: OVER71L

BW:71 WW:481 YW: Ratio:BW:87 WW:87 YW:93

C-T RED ROCK 5033 (BROWN JYJ REDEMPTION Y1334)

C-T REPUTATION 0094

C-T LINSEY 8119 (PIE ONE OF A KIND 352)

C-T RED QUEST 4010 (BROWN JYJ REDEMPTION Y1334)

OVER ELLA 731E ET (MPPA 99)

BIEBER GALEE 9513 (BIEBER MAKE MIMI 7249)

ProS	HB	GM	CED	BW	WW	YW	Milk	Marb	CW	REA
134	51	84	16	-3.4	80	124	28	0.64	46	0.49
12%	54%	5%	12%	22%	8%	13%	33%	15%	3%	4%

Carcass Merit

Calving Ease bull that is flashy and easy to look at. Phenotypically built as right as you can make one. Combines Calving Ease with breed leading Growth and Carcass traits. This dude is the complete package, look here. Elite donor cows in this pedigree.



Lot 18 ~ OVER Late Night 71L



OVER LAND SLIDE 0046L

Reg. #:4909976 BD:9/30/2023 Tattoo: OVER0046L

BW:68 WW:575 YW: Ratio:BW:88 WW:104 YW:99

C-T RED ROCK 5033 (BROWN JYJ REDEMPTION Y1334)

C-T REPUTATION 0094

C-T LINSEY 8119 (PIE ONE OF A KIND 352)

STRA RELENTLESS (BIEBER DRIVEN C540)

OVER HIT OR RELENT 0046H ET (MPPA 94)

OVER ELZA 743E (CLIN 412B OF Z12 X28)

ProS	HB	GM	CED	BW	WW	YW	Milk	Marb	CW	REA
133	69	64	17	-6.2	62	94	32	0.69	18	0.25
13%	20%	24%	9%	2%	66%	73%	7%	11%	72%	30%

Maternally Bred

Carcass Merit

Calving Ease and Marbling leader out of a Relentless ET daughter. Big time calving ease prospect.



OVER LOOK ALIKE 302L

Reg. #:4909930 BD:11/1/2023 Tattoo: OVER302L

BW:71 WW:595 YW: Ratio:BW:87 WW:107 YW:102

C-T RED ROCK 5033 (BROWN JYJ REDEMPTION Y1334)

C-T REPUTATION 0094

C-T LINSEY 8119 (PIE ONE OF A KIND 352)

BROWN AA PRESTIGIOUS B5153 (LSF TAKEOVER 9943W)

DIX MS CHEROK 302F (MPPA 101)

OSBORN MS CHEROK 128C (ANDRAS NEW DIRECTION R240)

ProS	HB	GM	CED	BW	WW	YW	Milk	Marb	CW	REA
102	38	65	16	-3.4	76	119	26	0.63	24	0.1
52%	78%	23%	11%	22%	15%	20%	49%	16%	52%	59%

Carcass Merit

Calving ease Reputation son whose maternal brother is our go to heifer bull. He performed like he reads on paper, below average at birth and above average at weaning. That's why we bought Reputation.



OVER LANDING 152L

Reg. #:4909996 BD:11/6/2023 Tattoo: OVER152L

BW:62 WW:483 YW: Ratio:BW:105 WW:105 YW:104

9 MILE FRANCHISE 6305 (SPUR FRANCHISE OF GARTON)

JENS MR PROBLEM SOLVER 7015H

C-BAR ABIGRACE 7015E (RED U-2 RECKONING 149A)

LASO BUCKET LIST E8G (5L ULTIMATUM 1893-03C)

OVER JUNA LANA 152J (MPPA 102)

OVER FLORENCE 8210F (OVER COOPERSTOWN 350C)

ProS	HB	GM	CED	BW	WW	YW	Milk	Marb	CW	REA
120	45	75	16	-3.7	74	118	32	0.71	33	0.27
27%	65%	11%	16%	18%	19%	21%	6%	10%	19%	26%

Carcass Merit

Dam is an ET from the "10" line. Calving ease with a big Grid Master index.



OVER LOOPER 183L

Reg. #:4909980 BD:9/23/2023 Tattoo: OVER183L

BW:67 WW:466 YW: Ratio:BW:112 WW:101 YW:104

BIEBER CL ATOMIC C218 (ANDRAS FUSION R236)

DIX ATOMIC 395H

DIX MS CHEROK 302F (BROWN AA PRESTIGIOUS B5153)

OVER FOREFATHER 081F ET (HXC DECLARATION 5504C)

OVER OVER JEFFERSON02J (MPPA 100)

OVER YOUR SLUMBER 183Y (SLEEPING EASY 625S)

ProS	HB	GM	CED	BW	WW	YW	Milk	Marb	CW	REA
86	40	46	16	-2.6	70	114	23	0.37	21	0.02
76%	74%	63%	12%	34%	33%	29%	76%	67%	61%	75%

Proven cow family behind this guy. A bull that is built right and really has no holes.



OVER LONG DRIVE 710L

Reg. #:4909906 BD:10/10/2023 Tattoo: OVER710L

BW:81 WW:562 YW: Ratio:BW:99 WW:101 YW:106

C-T RED ROCK 5033 (BROWN JYJ REDEMPTION Y1334)

C-T REPUTATION 0094

C-T LINSEY 8119 (PIE ONE OF A KIND 352)

BIEBER HARD DRIVE Y120 (LACY GOLD BAR 8123)

OVER EDEN'S LANA 710E (MPPA 105)

UNDERCOVER LOVER 810U (COLEY'S HI ROLLER 546R)

ProS	HB	GM	CED	BW	WW	YW	Milk	Marb	CW	REA
107	47	60	13	-3.5	75	112	31	0.61	23	0.39
45%	61%	30%	43%	21%	17%	32%	12%	18%	54%	12%

Maternally Bred

Carcass Merit

Dark red Reputation son from the "10" line that has been prominent here! Typical Reputation in that he has some extra dimension from every angle. Buy with confidence.



OVER LEAD 682L

Reg. #:4909886 BD:10/19/2023 Tattoo: OVER682L

BW:86 WW:649 YW: Ratio:BW:105 WW:117 YW:113

C-T RED ROCK 5033 (BROWN JYJ REDEMPTION Y1334)

C-T REPUTATION 0094

C-T LINSEY 8119 (PIE ONE OF A KIND 352)

C-BAR CONTROL 108Z (HXC CONQUEST 4405P)

OVER DOLLY 682D (MPPA 109)

SASHA 682 (RAVISHING ROB 113)

ProS	HB	GM	CED	BW	WW	YW	Milk	Marb	CW	REA
110	58	52	13	-2.1	78	121	32	0.62	22	-0.12
41%	39%	48%	47%	43%	11%	17%	6%	17%	58%	93%

Maternally Bred

Multiple AI sires in the pedigree and one that has been a favorite since he was a calf.

Growth and Marbling leader.

Dam is a calf raiser with a big time 109 MPPA.



OVER LEADER 577L

Reg. #:4909894 BD:10/19/2023 Tattoo: OVER577L

BW:79 WW:585 YW: Ratio:BW:97 WW:106 YW:104

C-T RED ROCK 5033 (BROWN JYJ REDEMPTION Y1334)

C-T REPUTATION 0094

C-T LINSEY 8119 (PIE ONE OF A KIND 352)

C-BAR CONTROL 108Z (HXC CONQUEST 4405P)

OVER CONSTANCE 577C (MPPA 105)

X-SHOCKIN 077X (ULRICH 293U)

ProS	HB	GM	CED	BW	WW	YW	Milk	Marb	CW	REA
120	61	59	16	-2.8	86	137	29	0.57	27	0.12
27%	34%	32%	14%	31%	2%	4%	23%	22%	41%	54%

Maternally Bred

WOW he is balanced in his EPD profile and will add value to his calves with this genetic package.

He is a maternal brother to the Herdsman sire.



Lot 23 ~ OVER Long Drive 710L



OVER LUG NUT 093L

Reg. #:4910006 BD:10/30/2023 Tattoo: OVER093L

BW:85 WW:595 YW: Ratio:BW:109 WW:107 YW:110

C-T RED ROCK 5033 (BROWN JYJ REDEMPTION Y1334)

C-T REPUTATION 0094

C-T LINSEY 8119 (PIE ONE OF A KIND 352)

OVER COOPERSTOWN 350C (ZAMBONI 13Z)

OVER HOLIDAY 093H (MPPA 105)

RAVISHING GINGER 593 (RED LAZY MC COWBOY CUT 26U)

ProS	HB	GM	CED	BW	WW	YW	Milk	Marb	CW	REA
70	12	58	13	-2.5	81	127	32	0.5	34	0.35
92%	98%	33%	47%	37%	7%	10%	5%	33%	16%	17%

Carcass Merit

Reputation x Cooperstown bred bull.

Maternal grand dam was purchased in the Red Angus sale in Denver years ago.

Solid Individual.



DIAS LAST QUIZ 093L

Reg. #:4900928 BD:9/12/2023 Tattoo: DIAS093L

BW:65 WW:573 YW: Ratio:BW:107 WW:96 YW:107

BIEBER CL STOCKMARKET E119 (PIE STOCKMAN 4051)

JLEA EDUCATION QUEST

C-BAR ABIGRACE X13 (RED FINE LINE MULBERRY 26P)

OVER CRUSHER (C-BAR CONTROL 108Z)

DSAS HARPER 093H (MPPA 98)

OVER CALI 5193C (C-BAR CONTROL 108Z)

ProS	HB	GM	CED	BW	WW	YW	Milk	Marb	CW	REA
108	34	74	14	-2.1	73	123	26	0.88	14	0.3
45%	84%	12%	37%	43%	21%	15%	49%	2%	81%	23%

Carcass Merit

093 is a more moderately framed bull out of the super productive "93" line. The first calf crop out of JLEA 133J did not disappoint. He sires cattle that come smaller at birth but do not lack for growth and are breed leading for carcass traits.



OVER LINE TO GAIN 089L

Reg. #:4909972 BD:10/3/2023 Tattoo: OVER089L
 BW:76 WW:551 YW: Ratio:BW:98 WW:100 YW:107
 C-T RED ROCK 5033 (BROWN JYJ REDEMPTION Y1334)

C-T REPUTATION 0094

C-T LINSEY 8119 (PIE ONE OF A KIND 352)
 9 MILE FRANCHISE 6305 (SPUR FRANCHISE OF GARTON)

OVER HI BLOCKANA 089H ET (MPPA 93)

X-BLOCKANA 02X (HXC CONQUEST 4405P)

ProS	HB	GM	CED	BW	WW	YW	Milk	Marb	CW	REA
108	32	76	13	-3.2	83	149	31	0.4	34	0.49
43%	86%	10%	43%	25%	4%	1%	8%	53%	16%	4%

Maternally Bred - One of Kelly's favorites from this summer.
 Flushmate brothers to his dam have been past sale favorites.



OVER LETS START 949L ET

Reg. #:5004583 BD:10/12/2023 Tattoo: OVER949L
 BW:80 WW:568 YW: Ratio:BW: WW: YW:
 BIEBER CL ENERGIZE F121 (BIEBER CL ATOMIC C218)

BIEBER JUMPSTART J137

BIEBER GALLEE 390G (GMRA TRINITY 5222)
 HXC CONQUEST 4405P (BECKTON JULIAN GG B571)

X-BLOCKANA 02X (MPPA 115)

FEDDES BLOCKANA 926 (LMAN KING ROB 8621)

ProS	HB	GM	CED	BW	WW	YW	Milk	Marb	CW	REA
89	29	60	15	-2.1	82	142	34	0.4	22	0.54
72%	90%	30%	26%	43%	6%	2%	3%	53%	58%	3%

Jumpstart has been popular and this ET son of our most productive cow is the only one we have.
 Performance Bull.



OVER LANDING 566L ET

Reg. #:5004585 BD:10/12/2023 Tattoo: OVER566L
 BW:73 WW:544 YW: Ratio:BW: WW: YW:
 LSF SRR RANCHER 7190E (5L BOURNE 117-48A)

LSF SRR PRIME PLUS 0111H

LSF SRR DELLA C5457 (LSF TAKEOVER 9943W)
 HXC CONQUEST 4405P (BECKTON JULIAN GG B571)

X-BLOCKANA 02X (MPPA 115)

FEDDES BLOCKANA 926 (LMAN KING ROB 8621)

ProS	HB	GM	CED	BW	WW	YW	Milk	Marb	CW	REA
116	45	72	13	-3.6	67	116	34	0.77	4	0.27
32%	66%	14%	50%	19%	44%	25%	2%	6%	96%	26%



OVER LANDED 77L ET

Reg. #:5004587 BD:10/9/2023 Tattoo: OVER77L
 BW:86 WW:526 YW: Ratio:BW: WW: YW:

ProS	HB	GM	CED	BW	WW	YW	Milk	Marb	CW	REA
99	24	75	11	-2.7	73	117	34	0.84	21	0.17
57%	93%	11%	73%	33%	23%	24%	2%	4%	61%	44%

Maternally Bred - Carcass Merit - Lots 31 & #32 are flushmates and they just keep getting better. They are deep bodied easy fleshing type of bulls that have turned it on once they came home off grass. Breed leaders for Marbling like their sire.



OVER LEGEND 096L

Reg. #:4909974 BD:9/28/2023 Tattoo: OVER096L
 BW:77 WW:614 YW: Ratio:BW:99 WW:111 YW:108
 OVER DRAFT PICK 413D (C-T RED QUEST 4010)

OVER HERDSMAN 577H

OVER CONSTANCE 577C (C-BAR CONTROL 108Z)
 9 MILE FRANCHISE 6305 (SPUR FRANCHISE OF GARTON)

OVER HA BLOCKANA 096H ET (MPPA 102)

X-BLOCKANA 02X (HXC CONQUEST 4405P)

ProS	HB	GM	CED	BW	WW	YW	Milk	Marb	CW	REA
124	44	80	13	-2.8	66	112	32	0.73	31	0.32
22%	67%	7%	52%	31%	50%	33%	6%	8%	23%	20%

Maternally Bred - Carcass Merit
 Balanced design, Balanced EPD's
 Proven cow family.
 Should make great females and with his high Marbling his feedlot progeny should grade well.



Past high seller ~ maternal brother to lots 30-32,
 maternal brother to the dams of lot 28 & 29



DIAS LETHAL WEAPON 144L

Reg. #:4905872 BD:8/27/2023 Tattoo: DIAS144L
 BW:58 WW:559 YW: Ratio:BW: WW: YW:
 BIEBER CL STOCKMARKET E119 (PIE STOCKMAN 4051)

JLEA EDUCATION QUEST

C-BAR ABIGRACE X13 (RED FINE LINE MULBERRY 26P)
 DSAS FIRSRT ROUND 449F (OVER DRAFT PICK 413D)

DSAS JULIET 144J (MPPA)

FRANK EDELLA 944 (CASINO BOMBER N33)

ProS	HB	GM	CED	BW	WW	YW	Milk	Marb	CW	REA
134	48	86	15	-0.1	86	141	27	0.7	51	0.34
12%	59%	4%	21%	81%	3%	3%	38%	10%	1%	18%

Carcass Merit

144 combines some very influential bloodlines from both the Angus and Red Angus breeds into one pedigree. Top of the Red Angus breed for both growth and carcass traits. This guy should sire calves with moderate birth weight that grow fast.



DIAS DS MATH QUEST 567M

Reg. #:4880094 BD:1/7/2024 Tattoo: DIAS567M

BW:88 WW:661 YW:Ratio:BW:115 WW:100 YW:

BIEBER CL STOCKMARKET E119 (PIE STOCKMAN 4051)

JLEA EDUCATION QUEST

C-BAR ABIGRACE X13 (RED FINE LINE MULBERRY 26P)

RED SSS OLY 554T (RED CROWFOOT OLE'S OSCAR)

1DRA MINOLA 567 (MPPA 100)

LSF MINOLA K1278 P4167 (LCC NEW CHAPTER A705L)

ProS	HB	GM	CED	BW	WW	YW	Milk	Marb	CW	REA
88	18	70	8	0.3	73	123	26	0.64	31	0.24
73%	96%	16%	96%	85%	21%	14%	52%	15%	22%	31%

Carcass Merit

567M has been a standout since the day he was born. Long, deep, wide and packed full of red meat. His dam is no stranger to putting studs in the bull pen. High performing bull with a balanced set of EPD's.



Lot 34 ~ DIAS DS Math Quest 567M



DIAS MASTER CLASS 206M

Reg. #:4880106 BD:1/8/2024 Tattoo: DIAS206M

BW:55 WW:675 YW:Ratio:BW:81 WW:102 YW:

BIEBER CL STOCKMARKET E119 (PIE STOCKMAN 4051)

JLEA EDUCATION QUEST

C-BAR ABIGRACE X13 (RED FINE LINE MULBERRY 26P)

KCC FIRSTCLASS 675-805 (KCC PINNACLE 949-109)

DSAS KIARA 206K (MPPA 101)

BIEBER DURHEIM 306E (BIEBER DRIVEN C540)

ProS	HB	GM	CED	BW	WW	YW	Milk	Marb	CW	REA
118	53	65	17	-4.9	71	118	28	0.79	22	0.26
30%	49%	22%	8%	7%	27%	22%	31%	5%	58%	28%

Carcass Merit

6% Simmental-- 206's momma sure did it right on her first try. This bull has always been a favorite of all who walk in the pen. Calving ease and growth offered in one package. Outcross pedigree stemming from the Bieber program in South Dakota.



OVER MR MULBERRY 780M

Reg. #:4998151 BD:1/7/2024 Tattoo: OVER708M

BW:85 WW:605 YW:1081Ratio:BW:97 WW:101 YW:105

RED FINE LINE MULBERRY 26P (RED COMPASS MULBERRY 449M)

ERKS MULBERRY 9918

ERKS ANNA 312 (RED NORTHLINE REV 341R)

LSF SAND HILLS 9008W (MESSMER PACKER S008)

BYU DOLLY J708 (MPPA 102)

TKP DOLLY 2264 (HAYCOW CUTTING EDGE 055)

ProS	HB	GM	CED	BW	WW	YW	Milk	Marb	CW	REA
122	47	75	15	-1.4	77	127	24	0.45	48	0.16
25%	61%	11%	27%	58%	12%	10%	67%	43%	2%	46%

Well balanced bull that is built wide and is a breed leader for growth.



OVER MIND READER 0062M

Reg. #:4998285 BD:1/19/2024 Tattoo: OVER0062M

BW:90 WW:690 YW:1194Ratio:BW:105 WW:115 YW:116

PIE ONE OF A KIND 352 (BUF CRK THE RIGHT KIND U199)

C-BAR ONE OF A KIND 90G

C-BAR MY OH MY MIMI 512C (C-BAR EVOLUTION 107Y)

TKP ALLSTAR 7047 (C-BAR ALL STAR 124C)

BYU RUBY 0062 (MPPA 105)

BYU RUBY 8004 (PIE HUSKER 5500)

ProS	HB	GM	CED	BW	WW	YW	Milk	Marb	CW	REA
90	46	44	11	0.6	71	115	27	0.29	27	0.14
71%	64%	66%	78%	88%	28%	26%	37%	82%	39%	50%

Performance bred bull with added length and frame. Will add pounds to a calf crop.



OVER MICHAEL 894M

Reg. #:4998137 BD:2/26/2024 Tattoo: OVER894M

BW:85 WW:629 YW:1093Ratio:BW:97 WW:105 YW:106

C-T RED ROCK 5033 (BROWN JYJ REDEMPTION Y1334)

C-T REPUTATION 0094

C-T LINSEY 8119 (PIE ONE OF A KIND 352)

OVER COOPERSTOWN 350C (ZAMBONI 13Z)

OVER FRANKFURT 894F (MPPA 103)

SALLEY MAE 694S (RAVISHING LIGHTENING 812 692)

ProS	HB	GM	CED	BW	WW	YW	Milk	Marb	CW	REA
100	67	32	15	-2.9	73	114	32	0.28	22	0.24
57%	21%	87%	21%	30%	23%	28%	5%	84%	56%	31%

Smooth, long sided individual that is balanced. Dam has raised bulls before.



OVER 045M

Reg. #:4998181 BD:1/23/2024 Tattoo: OVER045M
 BW:86 WW:611 YW:1156Ratio:BW:100 WW:102 YW:112
 C-T RED ROCK 5033 (BROWN JYJ REDEMPTION Y1334)
C-T REPUTATION 0094
 C-T LINSEY 8119 (PIE ONE OF A KIND 352)
 C-T RED QUEST 4010 (BROWN JYJ REDEMPTION Y1334)
OVER HERSHEY 045H (MPPA 103)
 OVER FAVE 845F (OVER COOPERSTOWN 350C)

ProS	HB	GM	CED	BW	WW	YW	Milk	Marb	CW	REA
109	47	62	16	-4.5	74	115	32	0.64	26	0.22
42%	61%	27%	16%	10%	19%	27%	6%	15%	43%	35%

Carcass Merit

Long growthy bull that is balanced in his EPD's and his build.
 Little more frame here.



OVER 0011M

Reg. #:4998287 BD:2/14/2024 Tattoo: OVER0011M
 BW:81 WW:619 YW:1103Ratio:BW:94 WW:103 YW:107
 BIEBER SPARTACUS A193 (BIEBER ROUSE SAMURAI X22)
BIEBER SPARTAN E639
 BIEBER RENEE 477A (VGW OLY 903)
 TKP ALLSTAR 7047 (C-BAR ALL STAR 124C)
BYU PAN ANN 0011 (MPPA 104)
 PIE PAN ANN 7382 (4MC NIGHT WATCH)

ProS	HB	GM	CED	BW	WW	YW	Milk	Marb	CW	REA
108	63	44	11	-1.5	73	111	30	0.43	23	0.1
44%	28%	66%	77%	56%	23%	35%	14%	47%	53%	59%

Maternally Bred

Moderate framed balanced bull.
 The Spartan cattle are known for functionality.



OVER MODERATOR 22M

Reg. #:4998269 BD:1/11/2024 Tattoo: OVER22M
 BW:64 WW:579 YW:1143Ratio:BW:102 WW:98 YW:111
 ANDRAS IN FOCUS B175 (MYTTY IN FOCUS)
ANDRAS FUSION R236
 ANDRAS BELLE B167 (ANDRAS THUNDER B105)
 OVER DRAFT PICK 413D (C-T RED QUEST 4010)
OVER KROME BLOCKANA 22K (MPPA 99)
 FEDDES BLOCKANA 9148 (LCHMN GRANDCANYON 1244G)

ProS	HB	GM	CED	BW	WW	YW	Milk	Marb	CW	REA
138	72	67	16	-3.1	55	88	27	0.8	19	-0.2
9%	16%	20%	16%	26%	86%	83%	37%	5%	69%	97%

Maternally Bred

Carcass Merit
 Fusion x Draft Pick This is a balanced eye appealing bull.
 Calving Ease & Marbling leader.
 Really grew from weaning to yearling.
 Maternal Grand dam is our donor 9148 we liked so much.



Cattle Drive



OVER MORNING 201M

Reg. #:4998257 BD:1/5/2024 Tattoo: OVER201M
 BW:63 WW:586 YW:1113Ratio:BW:100 WW:99 YW:108
 FEDDES OSCAR X28 (RED CROWFOOT OLE'S OSCAR)
CLIN 412B OF Z12 X28
 FEDDES BLOCKANA Z12 (LSF CYCLONE 9934W)
 JENS MR PROBLEM SOLVER 7015H (9 MILE FRANCHISE 6305)
OVER KIDDO 201K (MPPA 100)
 OVER HOT LARKABA 01D (OVER DRAFT PICK 413D)

ProS	HB	GM	CED	BW	WW	YW	Milk	Marb	CW	REA
97	34	64	15	-1.6	79	127	32	0.48	30	0.29
60%	83%	25%	22%	54%	9%	10%	6%	37%	25%	24%

Long bodied, growthy bull that had a 63# actual BW. Genomics read his DNA to say he is not as extremely low BW as his pedigree is lined up to be.



Lot 42 ~ OVER Moderator 22M



OVER MATADOR 181M

Reg. #AMGV1603977 BD:1/26/2024 Tattoo: 181M
29% GV BW:79 WW:743 YW:1249 Ratio:BW:95 WW:109 YW:114
C-T RED ROCK 5033 (BROWN JYJ REDEMPTION Y1334)

C-T REPUTATION 0094

C-T LINSEY 8119 (C-T VERDI 1030)
BIG GULP 711E (MOONSHINE 407B)

OVER JENDRA 181J

OVER EMERY 781E(CLIN 412B OF Z12 X28)

CED	BW	WW	YW	MLK	CW	REA	MB	FPI
13	-1.7	90	139	31	42	0.67	0.49	98.71
50%	25%	4%	10%	3%	35%	25%	25%	3%

Maternally Bred

Homozygous Polled

12 EPD's in top 35% of the breed.

A growthy, performance bull that has a BW under 80#.

Standout since he was a baby.

Reputation sired Balancer that can work anywhere.

Dam was flushed this summer.

Lot 43 ~ OVER Matador 181M



Maternal Grandam of Lot 43

44 **DIAS DS MOOSE 843M**
 Reg. #AMGV1593529 BD:1/13/2024 Tattoo: 843M
 38% GV BW:85 WW:659 YW:1162 Ratio:BW:100 WW:100 YW:101
 MAN O WAR F825 (COW TOWN D536)

JUSTICE 122J ET
 ROXI 623D (WHIT 25D)
 LSF PACINO 2034Z (LEACHMAN DENIRO A090X)

OVER 843F
 OVER DOWN UNDER 643D(C-BAR CONTROL 108Z)

CED	BW	WW	YW	MLK	CW	REA	MB	FPI
11	1	78	119	24	21	0.61	0.39	84.21
80%	85%	30%	40%	45%	90%	30%	45%	45%

Homozygous Polled ~ 843L is the more carcass oriented bull of the Justice sons. Even with the added carcass merit he is not lacking in style or mass. A maternal sister was a past consignment in the KS Gelbvieh Assn Pick of the Herd sale.



Lot 44 ~ DIAS DS Moose 843M

45 **OVER MAGNUM 020M**
 Reg. #AMGV1604563 BD:1/26/2024 Tattoo: 020M
 42% GV BW:77 WW:691 YW:1060 Ratio:BW:90 WW:102 YW:97
 C-T RED ROCK 5033 (BROWN JYJ REDEMPTION Y1334)

C-T REPUTATION 0094
 C-T LINSEY 8119 (C-T VERDI 1030)
 OVERTIME 175D (3G ZIP LINE 266Z)

SUNSHINE 020H
 SUNSHINE 705E(POWERLINE 401B)

CED	BW	WW	YW	MLK	CW	REA	MB	FPI
14	-4.6	63	80	28	32	0.53	0.52	84.45
35%	2%	90%	>95%	15%	65%	50%	25%	45%

Maternally Bred - Homozygous Polled
 This moderate, maternally bred bull is thick and complete. Maternal sister was the high selling female of any breed in our 2023 fall open female sale. Dam was flushed this summer.

46 **OVER MASTER MIND 1133M**
 Reg. #AMGV1604227 BD:3/12/2024 Tattoo: 1133M
 50% GV BW:86 WW:732 YW:1254 Ratio:BW:103 WW:108 YW:115
 C-T RED ROCK 5033 (BROWN JYJ REDEMPTION Y1334)

C-T REPUTATION 0094
 C-T LINSEY 8119 (C-T VERDI 1030)
 REVOLUTION 08T (BENNETT KINGPIN K403)

MISS HOJER J1133
 MISS HOJER D637(R COLLATERAL 2R)

CED	BW	WW	YW	MLK	CW	REA	MB	FPI
12	-0.2	83	125	32	29	0.63	0.45	91.88
65%	55%	15%	25%	2%	75%	30%	35%	15%

Maternally Bred - Homozygous Polled
 Just a March, but he was too good to hold over. Maternal brother was a stud last year and is seeing heavy use in our herd. His young dam could be a donor. Reputation makes tremendous cattle and here's proof.





OVER MACHINE 242M

Reg. #AMGV1603946 BD:1/7/2024 Tattoo: 242M
 28% GV BW:64 WW:718 YW:1127 Ratio:BW:94 WW:110 YW:103
 GB FIREBALL 672 (G A R SURE FIRE 6404)

YON FLAGSHIP

YON QUEEN G1085 (GB ANTICIPATION 432)
 BELLY BUSTER 211B (3G EZ MONEY 209Z)

OVER KLASS ACT 242K

MISS 42W 42Z(005X)

CED	BW	WW	YW	MLK	CW	REA	MB	FPI
19	-3.5	91	145	24	53	0.35	1.08	116.06
2%	10%	3%	4%	45%	10%	85%	1%	1%

Maternally Bred

Homozygous Polled / Homozygous Black

One of a kind Genetic Package! The only Balancer in the Registry that is 19 CED 145 YW 1.0 Marbling and 116 FPI.

Maternally his grand dam has produced multiple herd-bulls.

Dam's full sister is Kelly's pick of the 2023 heifer crop.

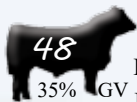
Deep bodied, big bold ribbed individual that offers Calving Ease, Growth and Carcass in one package.

Raised by a 2 year old.

Lot 47 ~ OVER Machine 242M



Yon Flagship sire of lots 47 and 52



DIAS DS MONTEZUMA 9331M

Reg. #AMGV1591973 BD:2/8/2024 Tattoo: 9331M
 35% GV BW:90 WW:702 YW:1227 Ratio:BW:106 WW:106 YW:106
 BALDCO LOTTO 36 (BSF HOT LOTTO 1401)

OVER FLAT SPIN 2108F

ZAMMY 2108Z (BALDCO EVERELDA ENTENSE 620)
 OVER DANGER ZONE 91D ET (3G EZ MONEY 209Z)

OVER GALEE 9331G

A PRETTY ONE 331A(3G XPEDITER)

CED	BW	WW	YW	MLK	CW	REA	MB	FPI
12	-1.6	74	110	22	45	0.4	0.20	79.19
65%	25%	45%	60%	65%	25%	70%	90%	70%

Maternally Bred

Homozygous Black / Scurred ~ 9331M is a bull who offers some extra length and extension. Should sire easy keeping replacement females. Ratioed 106 for both WW and YW.



Lot 48 ~ DIAS DS Montezuma 9331M



OVER MONTANA 2910M

Reg. #AMGV1604001 BD:1/8/2024 Tattoo: 2910M
 31% GV BW:68 WW:758 YW:1228 Ratio:BW:100 WW:116 YW:113
 COLEMAN CHARLO 0256 (O C C PAXTON 730P)

COLEMAN BRAVO 6313

COLEMAN DONNA 714 (BOHI ABIGALE 6014)
 OVER FOR JUSTICE 217F (CHIEF JUSTICE C205)

OVER KAMMY 2910K

OVER GOIN TO A PARTY 910G ET(PARTISOVER SOLUTION)

CED	BW	WW	YW	MLK	CW	REA	MB	FPI
16	-2.2	80	127	29	54	0.18	0.36	89.29
15%	20%	25%	25%	10%	25%	>95%	55%	25%

Homozygous Polled / Homozygous Black

Blending old Partisover Ranch genetics with today's current Angus and Balancer genetics created a wide bodied thick ended dude.

Lots of grow and meat in this one.
 Raised by a 2 year old.



Lot 49 ~ OVER Montana 2910M



DIAS MYSTERIO 973M

Reg. #AMGV1591975 BD:1/12/2024 Tattoo: 973M
 42% GV BW:90 WW:725 YW:1107 Ratio:BW:106 WW:110 YW:96
 BALDCO LOTTO 36 (BSF HOT LOTTO 1401)

OVER FLAT SPIN 2108F

ZAMMY 2108Z (BALDCO EVERELDA ENTENSE 620)
 PLAINSMAN 7102E (CONNEALY COMRADE 1385)

KAID GALAXY 973G

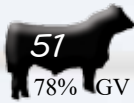
RCO NO TAN LINES(NEXT STEP 285X72)

CED	BW	WW	YW	MLK	CW	REA	MB	FPI
10	-0.3	75	109	24	37	0.47	0.15	76.7
90%	55%	40%	60%	45%	35%	50%	95%	95%

Homozygous Polled / Homozygous Black ~ Quite possibly the most powerful 2108 son to ever be offered. A bull that should sire scale crushing calves due to his added length. 973M recorded an actual weaning weight of 785 and ratioed 110 for WW.



Lot 50 ~ DIAS Mystery 973M



DIAS MAVERICK 173M

Reg. #AMGV1591962 BD:1/17/2024 Tattoo: 173M
 78% GV BW:80 WW:701 YW:1095 Ratio:BW:99 WW: YW:
 GHOST TOWN 9422 ET (EXACT COMBINATION 7409)

DIAS DS KASPER 970IK

9701G (KITTY'S DREAM 6526)
 3G ZIP LINE 266Z (3G EXCELLENCE 063X)

KLSS JOURNEY 173J

RCO NO TAN LINES(NEXT STEP 285X72)

CED	BW	WW	YW	MLK	CW	REA	MB	FPI
13	-1.2	66	93	19	35	0.44	0.13	72
50%	30%	75%	85%	85%	85%	45%	90%	90%

Homozygous Polled / Homozygous Black ~ A higher percentage bull that offers some unique pieces. Dam is a picture perfect 3G Zipline daughter whose first son was retained as a herd sire. Same cow family as 973M.



O12M

Reg. #AMGV1608431 BD:1/15/2024 Tattoo: 012M
 50% GV BW:80 WW:730 YW:1147 Ratio:BW:114 WW: YW:
 BENNETT Y504 (CONNEALY TRUSTMARK)

BENNETT D922

MISS TRUSTMARK W646 (MISS FORTUNE U490)
 SCHIEFELBEIN ALLIED 514 (PLATTEMERE WEIGH UP K360)

DUNN'S MISS KEYNOTE 202K

DUNN'S MISS DEPARTURE 036H(SKF DUNN'S DEPARTURE 052D)

CED	BW	WW	YW	MLK	CW	REA	MB	FPI
16	-1.8	70	116	24	33	0.62	0.51	87.83
15%	25%	65%	45%	45%	60%	30%	20%	30%

Maternally Bred

Homozygous Polled / Homozygous Black ~ Nursed a beautiful first calf dam who was Brent's pick of the Balancer bred heifers at the long time Gelbvieh breeder Sandy Knoll Farms. We have big plans for her. This is a stout & good dude.



OVER LAST CALL 2108L

Reg. #AMGV1595770 BD:9/15/2023 Tattoo: 2108L
 41% GV BW:88 WW:524 YW: Ratio:BW:100 WW:100 YW:104
 FOUNDING FATHER 880F (KING JAMES 3127A)

OVER HALLOWED 775H

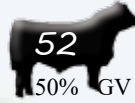
RROG ELECTRA 775E (MS FREIGHTLINER M 3228A)
 WHO DONE IT (SILVERADO)

ZAMMY 2108Z

()

CED	BW	WW	YW	MLK	CW	REA	MB	FPI
12	-0.9	71	116	26	44	0.57	0.21	78.8
65%	40%	60%	45%	25%	25%	40%	85%	75%

Homozygous Polled / Homozygous Black ~ A maternal brother has worked for both the Sasse family and us. Sire 775H is a past sale topper. Dam has been very consistent.



OVER MANAGEMENT 2914M

Reg. #AMGV1603947 BD:1/7/2024 Tattoo: 2914M
 50% GV BW:74 WW:690 YW:1212 Ratio:BW:108 WW:106 YW:111
 GB FIREBALL 672 (G A R SURE FIRE 6404)

YON FLAGSHIP

YON QUEEN G1085 (GB ANTICIPATION 432)
 RUSH 110H ET (BENNETT E158)

OVER KOREE 2914K

MS JACKPOT 914G OF 2513(TPG JACKPOT 7551B ET)

CED	BW	WW	YW	MLK	CW	REA	MB	FPI
16	-1.8	91	152	25	46	0.88	0.74	105.31
15%	25%	3%	2%	35%	25%	4%	4%	1%

Homozygous Polled / Black Hidden-Red Carrier

Check out the spread from negative for BW to a breed leading YW EPD.

Feed lot progeny should be valuable with his carcass traits. Raised by a 2 year old.



OVER LIVIN IN BLACK 294L ET

Reg. #AMGV1608096 BD:10/9/2023 Tattoo: 294L
 31% GV BW:96 WW:509 YW: Ratio:BW: WW: YW:
 BAR R JET BLACK (CONNEALY BLACK GRANITE)

LAR MAN IN BLACK

JMB MAXINE TG 2131 (BAR R IRIS ANITA 0113)
 WHITE LIGHTNING 151 (SANDMAN 6523S)

Y-BELLE 131Y

WOODLAND BELLE 131L(B/R NEW DESIGN 036)

CED	BW	WW	YW	MLK	CW	REA	MB	FPI
8	3.9	99	156	27	83	0.72	0.48	93.83
>95%	>95%	1%	1%	20%	1%	15%	25%	10%

Homozygous Black ~ If you want cattle that will flat grow and make those 1,700 lbs. steers the industry wants now, here is a bull to use on your cows. Top 1% for grow and carcass weight. Pounds pay.



OVER REIDS LAD 132L

Reg. #AMGV1595750 BD:2023-09-16 Tattoo: 132L
 75% GV BW:64 WW:528 YW: Ratio:BW:101 WW:111 YW:113
 CHIEF JUSTICE C205 (CAROLINA LEVERAGE 3214A)

OVER FOR JUSTICE 217F

WHITE ROCK PRIDE U 217 (MISS FORTUNE U490)
 CTR JACKPOT 8660F ET (DAVIDSON JACKPOT 74Z)

OVER JACKPOT TAKE-HER 132J ET

OVER FREE LADY 81F(3G ZIP LINE 266Z)

CED	BW	WW	YW	MLK	CW	REA	MB	FPI
15	0.5	80	119	26	39	0.77	0.53	90.81
25%	75%	25%	40%	25%	40%	10%	20%	20%

Maternally Bred

Homozygous Black / Homozygous Polled

Balanced trait bull who is high for Marbling for being 75% GV Dam is a flushmate to a past sale topper who generated more interest than any Gelbvieh bull we have sold. Raised by a 2 year old.



OVER LEADER 9544L

Reg. #AMGV1595791 BD:11/1/2023 Tattoo: 9544L
 50% GV BW:90 WW:591 YW: Ratio:BW:102 WW:112 YW:113
 POST ROCK POWER BUILT 37B8 (TOP PRODUCER 282Z3)

315G

3901A (POST ROCK WILMA 298Z8 ET)
 WEBR MEL 740 (WEBR MEL 552)

GAIL FORCE 9544G

EVANGEL 5944E(LSF PACINO 2034Z)

CED	BW	WW	YW	MLK	CW	REA	MB	FPI
12	-2.7	75	113	25	22	0.35	0.04	77.78
65%	15%	40%	55%	35%	90%	85%	>95%	80%

Maternally Bred

Homozygous Polled ~ One of the favorites all summer on grass and now he has turned into a truck. Big performance ratios but barely above average at birth. Keep all of his daughters! You won't find Red Balancers like this very often.



Lot 57 ~ OVER Leader 9544L



DIAS LIBERTY 5082L

Reg. #AMGV1582038 BD:9/16/2023 Tattoo: 5082L
 59% GV BW:93 WW:637 YW: Ratio:BW: WW: YW:
 MAN O WAR F825 (COW TOWN D536)

JUSTICE 122J ET

ROXI 623D (WHIT 25D)
 3G ARISTOTLE 320A ET (3G TIME MACHINE 758T ET)

SAS CHEYENNE5082C

XTRA CONTROL 082X(SCHULER WARRIOR 7323T)

CED	BW	WW	YW	MLK	CW	REA	MB	FPI
10	1.4	71	94	16	36	1.05	0.17	71.71
90%	90%	60%	90%	>95%	95%	50%	90%	95%

Homozygous Polled ~ Justice 122J sires cattle with big time performance and this calf crop is no exception. 5082L stems from a long line of productive cows. Maternal brother was a favorite in last year's sale.



Lot 58 ~ DIAS Liberty 5082L



OVER LOGIC 98L

Reg. #AMGV1595794 BD:10/11/2023 Tattoo: 98L
 39% GV BW:84 WW:515 YW: Ratio:BW:95 WW:98 YW:104
 OVER DRAFT PICK 413D (C-T RED QUEST 4010)

OVER HERDSMAN 577H

OVER CONSTANCE 577C (OVER BLUSH 413B)
 SKYS ENCORE 7086E (FOREMAN 2002Z)

GIRLS ENCORE 98G ET

028X(HILLE U112 URIAL)

CED	BW	WW	YW	MLK	CW	REA	MB	FPI
14	-1.9	72	119	19	28	0.13	0.54	87.67
35%	20%	55%	40%	85%	80%	>95%	20%	30%

Heterozygous Polled

Big square hipped bull with a wide top. This one is easy to find in the pen. Visitors have found him. Maternal grand dam was a favorite purebred Gelbvieh cow for years.



Lot 59 ~ OVER Logic 98L

60 OVER LEGEND 9608L
 Reg. #AMGV1595792 BD:10/21/2023 Tattoo: 9608L
 37% GV BW:81 WW:660 YW: Ratio:BW:91 WW:125 YW:110
 C-T RED ROCK 5033 (BROWN JYJ REDEMPTION Y1334)

C-T REPUTATION 0094

C-T LINSEY 8119 (C-T VERDI 1030)
 OVER ENSHRINED 028E (OVER COOPERSTOWN 350C)

OVER GOING SHINING 9608G

OVER DANG ME 608D(3G ZIP LINE 266Z)

CED	BW	WW	YW	MLK	CW	REA	MB	FPI
13	-4.6	67	99	30	26	0.77	0.49	87.79
50%	2%	75%	85%	4%	85%	10%	25%	30%

Maternally Bred

Homozygous Polled

This mating should make replacement females.

Maternal grand dam 608D was flushed this summer.

67 DIAS DS LOCOMOTIVE 8182L
 Reg. #AMGV1582002 BD:9/16/2023 Tattoo: 8182L
 37% GV BW:85 WW:681 YW: Ratio:BW: WW: YW:
 MAN O WAR F825 (COW TOWN D536)

JUSTICE 122J ET

ROXI 623D (WHIT 25D)
 LOOSLI RIGHT ON 423 (BUF CRK THE RIGHT KIND U199)

OVER FEV 8182F

OVER DARA 6182D(C-T RED QUEST 4010)

CED	BW	WW	YW	MLK	CW	REA	MB	FPI
14	-1.3	63	94	24	18	0.39	0.05	69.77
35%	35%	90%	90%	45%	75%	95%	>95%	>95%

Homozygous Polled ~ Another typical Justice son who is powerfully constructed and loaded with performance. 8182L comes with a little bit more calving ease coming from the bottom side of his pedigree.

62 OVER LEED 1794L
 Reg. #AMGV1595766 BD:9/29/2023 Tattoo: 1794L
 34% GV BW:58 WW:493 YW: Ratio:BW:91 WW:104 YW:102
 BIEBER CL ATOMIC C218 (ANDRAS FUSION R236)

DIX ATOMIC 395H

DIX MS CHEROK 302F (BIEBER DATELINE 308Y)
 BIG GULP 711E (MOONSHINE 407B)

OVER JUNE 1794J

OVER ENGINE 7494E(POST ROCK POWER BUILT 37B8)

CED	BW	WW	YW	MLK	CW	REA	MB	FPI
16	-3.8	61	86	27	9	0.04	0.22	76.01
15%	4%	90%	>95%	20%	>95%	>95%	85%	85%

Homozygous Polled

Calving Ease option raised by a 2 year old.

Backed by great cow line.

63 OVER LA ENCORE 082L
 Reg. #AMGV1572261 BD:4/28/2023 Tattoo: 082L
 60% GV BW:87 WW:617 YW: Ratio:BW:100 WW:102 YW:
 SKYS ENCORE 7086E (FOREMAN 2002Z)

MR ENCORE 109H

BAG MISS SPADE 54Y (CHERRY'S DELIGHT 29Y)
 OVER ENSHRINED 028E (OVER COOPERSTOWN 350C)

HEADIN OUT 082H

RROG EFLUENT 782E(BANK ROLL 866B)

CED	BW	WW	YW	MLK	CW	REA	MB	FPI
11	1.1	64	96	22	30	0.52	0.19	69.79
80%	85%	85%	90%	65%	70%	50%	90%	>95%

Muscle shape and expression.

Big ribbed, deep bodied.

64 OVER LEADER 332L
 Reg. #AMGV1576372 BD:03/26/2023 Tattoo: 332L
 50% GV BW:81 WW:703 YW: Ratio:BW:92.6 WW:95 YW:
 C-T RED QUEST 4010 (BROWN JYJ REDEMPTION Y1334)

OVER DRAFT PICK 413D

OVER BLUSH 413B (C-T BLOCKANA 2023)
 WHO DONE IT (SILVERADO)

ADINA 332A

XTRA FUN 032X(HORSE SENSE U156)

CED	BW	WW	YW	MLK	CW	REA	MB	FPI
13	0.1	83	123	26	48	0.32	0.38	87.97
50%	65%	15%	30%	25%	20%	85%	50%	25%

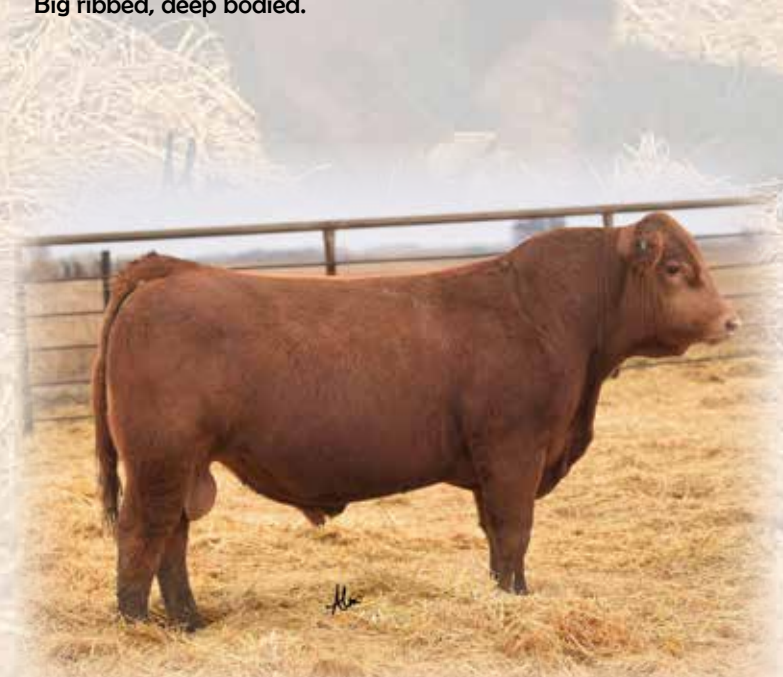
Maternally Bred

Heterozygous Polled

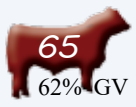
Long sided

Thick topped bull we think you will find

He got in a 2 calf contemporary group with the #1 WW bull, in the big group he would ratio about 110.



Lot 64 ~ OVER Leader 332L



OVER LION 905L

Reg. #AMGV1572488 BD:4/20/2023 Tattoo: 905L
 62% GV BW:92 WW:77 YW: Ratio:BW:111 WW:122 YW:108
 ELI 117E (157C)

HILLE H705 HERBIE

HILLE A213 ET (123B)
 COLEMAN BRAVO 6313 (COLEMAN CHARLO 0256)

OVER GET GOIN 905G ET

CHA-CHING 211C(3G EZ MONEY 209Z)

CED	BW	WW	YW	MLK	CW	REA	MB	FPI
14	-0.4	85	124	26	44	0.59	0.38	90.25
35%	50%	10%	30%	25%	25%	35%	50%	20%

Maternally Bred

Homozygous Polled

Balanced EPD's

Deep Bodied

Stood out all summer on grass.



OVER LETS ROCK 083L ET

Reg. #AMGV1583598 BD:5/11/2023 Tattoo: 083L
 31% GV BW:84 WW:659 YW: Ratio:BW: WW: YW:
 RREDS SENECA 731C (BIEBER ROLLIN DEEP Y118)

OVER HIGH STAKES 215H ET

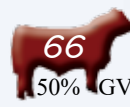
X-BLOCKANA 02X (RREDS ASTER 309A)
 WHITE LIGHTNING 151 (SANDMAN 6523S)

Y-BELLE 131Y

WOODLAND BELLE 131L(B/R NEW DESIGN 036)

CED	BW	WW	YW	MLK	CW	REA	MB	FPI
11	1.7	73	120	28	31	0.32	0.15	74.15
80%	90%	50%	35%	15%	70%	85%	95%	90%

Homozygous Polled ~ Maybe the most impressive designed bull in the offering. A show stopping look like his donor dam. His sire OVER High Stakes 215H was a sale topping stud a few years ago. He'll fix your structure problems.



OVER LEND A HAND 940L

Reg. #AMGV1572500 BD:5/3/2023 Tattoo: 940L
 50% GV BW:92 WW:689 YW: Ratio:BW:111 WW:108 YW:107
 C-T RED ROCK 5033 (BROWN JYJ REDEMPTION Y1334)

C-T REPUTATION 0094

C-T LINSEY 8119 (C-T VERDI 1030)
 CORNHUSKER RED 524C (TRACTION 7412)

GRAVY LADY 940G

BUTTERFINGER 40B(TRIED & TRUE 006T)

CED	BW	WW	YW	MLK	CW	REA	MB	FPI
13	0.6	92	141	27	24	0.21	0.44	93.43
50%	75%	3%	10%	20%	85%	95%	45%	10%

Homozygous Polled

Only 3 red Balancer bulls in the breed match his BW, WW, YW and FPI combination.

Maternal grand dam has raised our high seller twice.

Proven cow line.



Donor dam of lot 67



We were honored that the NW district FFA Advisors asked to host their annual summer planning meeting at our sale facility and get a little insight about Overmiller Gelbvieh and Red Angus as well as Norma's Country Lodgings business.



OVER LONGITUDE 9723L

Reg. #AMGV1572504 BD:4/16/2023 Tattoo: 9723L
 76% GV BW:72 WW:661 YW: Ratio:BW:86 WW:104 YW:97
 ELI 117E (157C)

HILLE H705 HERBIE

HILLE A213 ET (123B)
 OVER DANGER ZONE 91D ET (3G EZ MONEY 209Z)

OVER GET IN THE ZONE 9723G

5723C(J D Ten X 324)

CED	BW	WW	YW	MLK	CW	REA	MB	FPI
16	-2.2	75	108	22	18	0.3	0.16	80.71
15%	15%	35%	55%	60%	90%	90%	85%	50%

Maternally Bred

Homozygous Polled

A higher % bull that is low BW and high quality.



Lot 68 ~ OVER Longitude 9723L



OVER LENDING 647L

Reg. #AMGV1572511 BD:4/23/2023 Tattoo: 647L
 93% GV BW:71 WW:645 YW: Ratio:BW:86 WW:101 YW:94
 POST ROCK POWER BUILT 37B8 (TOP PRODUCER 282Z3)

315G

3901A (POST ROCK WILMA 298Z8 ET)
 HILLE C169 (ARIAT 127A)

HILLE G647

HILLE A231(WAYLON 936W)

CED	BW	WW	YW	MLK	CW	REA	MB	FPI
16	-3.3	76	113	22	16	0.62	0.019	79.94
10%	3%	25%	30%	60%	90%	60%	95%	35%

Homozygous Polled ~ Red Purebreds are getting harder to find and not many of them come in a calving ease package like this guy. His dam is a big bodied female that Roger likes.



OVER LEIF 458L

Reg. #AMGV1572509 BD:4/30/2023 Tattoo: 458L
 100% GV BW:68 WW:668 YW: Ratio:BW: WW: YW:
 ELI 117E (157C)

HILLE H705 HERBIE

HILLE A213 ET (123B)
 HILLE STOCK OPTIONS D410 (CAROLINA LEVERAGE 3214A)

HILLE G458

HILLE C283(A12)

CED	BW	WW	YW	MLK	CW	REA	MB	FPI
16	-2	77	108	23	34	0.65	0.22	83.57
10%	10%	25%	45%	50%	25%	55%	50%	20%

Maternally Bred - Homozygous Polled ~ Purebred from the Maternal Chimney Butte program. We bought his sire to make great females. Nice spread with top 10% CED to top 25% WW. He is a twin. Dam is an interesting purebred female.



OVER LOFT 938L

Reg. #AMGV1572499 BD:4/26/2023 Tattoo: 938L
 100% GV BW:88 WW:765 YW: Ratio:BW:106 WW:120 YW:108
 BENNETT E158 (33A)

RUSH 110H ET

MS GUNNISON 106R 3051A (MISS X593 B192)
 APOLLO (TIME TRAVELER 450X)

OVER GRACIOUS 938G

OVER BLANKET 438B ET(YOUNG GUN 444Y)

CED	BW	WW	YW	MLK	CW	REA	MB	FPI
14	2.7	91	139	22	33	1.05	0.11	84.49
30%	>95%	2%	2%	60%	30%	2%	80%	15%

Homozygous Polled / Homozygous Black

Performance Bull

Stood out since a calf. Hails from a top cow family. Dam is maternal grand dam to lot 76.



Lot 71 ~ OVER Loft 938L



OVER LASSO 331L

Reg. #AMGV1572446 BD:5/23/2023 Tattoo: 331L
 61% GV BW:80 WW:664 YW: Ratio:BW:93 WW:104 YW:93
 POST ROCK POWER BUILT 37B8 (TOP PRODUCER 282Z3)

315G

3901A (POST ROCK WILMA 298Z8 ET)
 3G XPEDITER (3G SMOKE N' MIRRORS)

A PRETTY ONE 331A

PRETTY RED ONE 431P(RAVISHING LIGHTENING 812)

CED	BW	WW	YW	MLK	CW	REA	MB	FPI
12	0.4	76	121	24	48	1.06	0.05	75.9
65%	70%	35%	35%	45%	20%	1%	>95%	85%

Maternally Bred

Heterozygous Polled / Black Hided-Red Carrier

Easy on the eye describes this well balanced dude. Dam raised high selling female in a past Pick Of the Herds female sale.



Lot 72 ~ OVER Lasso 331L



735L

Reg. #AMGV1572528 BD:6/22/2023 Tattoo: 735L
 75% GV BW:83 WW:654 YW: Ratio:BW:97 WW:103 YW:96
 ELI 117E (157C)

HILLE H705 HERBIE

HILLE A213 ET (123B)
 BASIN PAYWEIGHT 1682 (BASIN PAYWEIGHT 006S)

EVER PAY 735E ET

ALEIGHA 344A(WHO DONE IT)

CED	BW	WW	YW	MLK	CW	REA	MB	FPI
14	-0.6	70	103	24	31	0.33	0.16	75.3
35%	50%	65%	75%	45%	70%	85%	95%	90%

Black Hided-Red Carrier

Dam is a product of our ET program from the "44" cow line. There are 3 of these ET sisters including the dam of last years \$3,600 sale topping heifer.



We hosted the Colby Community College Beef Production class



OVER LA JUNTA 1981L

Reg. #AMGV1572431 BD:5/9/2023 Tattoo: 1981L
 62% GV BW:70 WW:670 YW: Ratio:BW:87 WW:105 YW:97
 CHIEF JUSTICE C205 (CAROLINA LEVERAGE 3214A)

OVER JUSTICE 81J

OVER FREE LADY 81F (MISS FORTUNE U490)
 PLAINSMAN 7102E (CONNEALY COMRADE 1385)

OVER JU JU 1981J

GO LIGHT 981G(CLIN 412B OF Z12 X28)

CED	BW	WW	YW	MLK	CW	REA	MB	FPI
18	-4.1	66	100	26	0	0.27	0.47	87.28
4%	3%	80%	80%	25%	>95%	95%	30%	30%

Maternally Bred

Homozygous Polled / Black Hided-Red Carrier

Serious calving ease option.

These last 3 bulls sired by 81J are all high quality individuals out of 1st calf heifers.



OVER LANDON 1775L

Reg. #AMGV1583015 BD:5/10/2023 Tattoo: 1775L
 64% GV BW:75 WW:739 YW: Ratio:BW:94 WW:116 YW:103
 CHIEF JUSTICE C205 (CAROLINA LEVERAGE 3214A)

OVER JUSTICE 81J

OVER FREE LADY 81F (MISS FORTUNE U490)
 7326E (S A V REAL PERFORMANCE 4876)

OVER JELLY 1775J

RROG ELECTRA 775E(MCC PAYWEIGHT 5040)

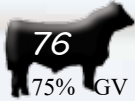
CED	BW	WW	YW	MLK	CW	REA	MB	FPI
16	-1	72	113	28	30	0.71	0.32	83.66
15%	40%	55%	55%	15%	70%	15%	65%	45%

Maternally Bred

Homozygous Polled / Homozygous Black

Big Time WW ratio.

Grand dam is a maternal brother to a past high selling bull.



OVER LIME TIME 1938L

Reg. #AMGV1572430 BD:4/25/2023 Tattoo: 1938L
 BW:72 WW:706 YW: Ratio:BW:89 WW:111 YW:100
 CHIEF JUSTICE C205 (CAROLINA LEVERAGE 3214A)

OVER JUSTICE 81J

OVER FREE LADY 81F (MISS FORTUNE U490)
 BALDRIDGE CHALLENGER (BALDRIDGE XPAND X743)

OVER JEAN 1938J

OVER GRACIOUS 938G(APOLLO)

CED	BW	WW	VW	MLK	CW	REA	MB	FPI
16	-3.9	70	103	27	34	0.55	0.31	84.38
15%	4%	65%	75%	20%	60%	45%	65%	45%

Maternally Bred

Homozygous Polled / Black Hided-Red Carrier

Soggy Middled individual that has some outstanding cows in his pedigree.

Stood out all last winter and this summer.

Calving ease prospect that was raised by a 2 year old

Super athletic and sound on the move. A bull that Wow'ed a college judging team when they were here.

Lot 76 ~ OVER Lime Time 1938L



We are offering 120-130 commercial open heifers.

The groups consist of:

90 reds

25 blacks

6 red white faces

5 black white faces.

These will be sold in groups.

AI Sires of these heifers are:

Bieber Brave

RREDS Fundamental

CLIN 412B of Z12 X28 (Lance)

OVER Draft Pick 413D

Tehama Tahoe

Bieber Energize

Duff Red Blood

Natural Sires:

Feddes Maggio

H/H Degregation

C-T Reputation





Bieber Brave E573



RREDS Fundamental 8818



OVER Draft Pick 413D



CLIN 412B of Z12 X28
(Lance)



Overmiller

Gelbvieh and Red Angus

4062 O Road

Smith Center, KS 66967

